

U1
PIC18F67J60-X-PT
TOFP64_10X10MC

1	RE1/P2C	64	RE2/P2B
2	RE0/P2D	63	RE3/P3C
3	RB0/INT0/FLT0	62	RE4/P3B
4	RB1/INT1	61	RE5/P1C
5	RB2/INT2	60	RD0/P1B
6	RB3/INT3	59	RD1/ECCP3/P3A
7	*MCLR	58	RD2/CCP4/P3D
8	R04/CCP5/P1D	57	VDD
9	VSS	56	VSS
10	VDDCORE/VCAP	55	VSSPLL
11	RF7/*SS1	54	VDDPLL
12	RF6/AN11	53	RB1AS
13	RF5/AN10/CVREF	52	VSSTX
14	RF4/AN9	51	TPOUT+
15	RF3/AN8	50	TPOUT-
16	RF2/AN7/C1OUT	49	VDDTX
17	RF1/AN6/C2OUT	48	VDDRX
18	ENVREG	47	TP1N+
19	AVDD	46	TP1N-
20	AVSS	45	VSSRX
21	RA3/AN3/VREF+	44	RB4/KB10
22	RA2/AN2/VREF-	43	RB5/KB11
23	RA1/LEDB/AN1	42	RB6/KB12/PGC
24	RA0/LEDA/AN0	41	VSS
25	VSS	40	OSC2/CLKO
26	VDD	39	OSC1/CLKI
27	RA5/AN4	38	VDD
28	RA4/T0CK1	37	RB7/KB13/PGD
29	RC1/T1OS1/ECCP2/P2A	36	RC5/SDO1
30	RC0/T1OS0/T13CK1	35	RC4/SDI1/SDA1
31	RC6/TX1/CK1	34	RC3/SCK1/SCL1
32	RC7/RX1/DT1	33	RC2/ECCP1/P1A

BZ1
PKLCS1212E4001-R1

1	1	2
2	1	2
3	1	2
4	1	2

Y1
O22FA2380013312
EPSON-FA-238

1	1	2	3
2	1	2	3
3	1	2	3
4	1	2	3

J1
RJLD260TC1

1	TD+	NC	7
2	TD-	GND	8
3	RD+	G+	9
4	TTCT	G-	10
5	RTCT	Y-	11
6	RD-	Y+	12

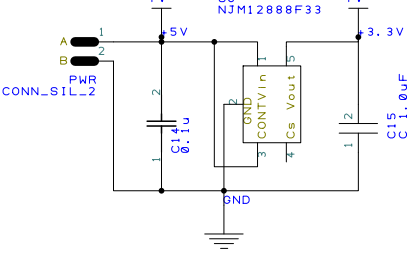
16	1	2
15	1	2
14	1	2
13	1	2
12	1	2
11	1	2
10	1	2
9	1	2
8	1	2
7	1	2
6	1	2
5	1	2
4	1	2
3	1	2
2	1	2

R1
330

R2
330

1	1	2
1	1	2

PL2
CONN_DIL-16
DIL



PL1
CONN_SIL-6

QRH21BB31A106K
C12

1	1	2
1	1	2

ICSP
CONN_SIL-6

R3
0.863M 50WTF 10K

1	1	2
1	1	2

D1
D2

D3
D4

1	1	2
1	1	2
1	1	2
1	1	2

L1
MEM2012PS0R0

L2
MEM2012PS0R0

1	1	2	3
1	1	2	3
2	1	2	3
2	1	2	3

R4
50

R5
50

R6
50

R7
2.2K

1	1	2
1	1	2
1	1	2
1	1	2

C4
330F

C3
330F

C1
0.1u

1	1	2
1	1	2
1	1	2

